

## The Butterfly Garden

Adjacent to the California Native Garden and to the left of the path leading to the New Zealand area, you'll discover a Butterfly Garden based on California native plants. Plants have been selected to provide a nectar source nearly all year round. In addition, some plants provide a food source for caterpillars. Butterflies are normally active only on warm sunny days. Buckeyes and Ringlets are common in summer, while Monarchs visit mainly in winter, although some individuals have laid their eggs here. You can help reverse the downward trend in some butterfly populations by encouraging others to plant appropriate species and avoid the use of pesticides in their gardens.



## Butterflies in your Garden

The caterpillars of most of our local butterflies feed on native trees and grasses or weeds in wildland areas. The butterflies that you will see in your garden depend mostly on where you live. Growing nectar plants is the best way to invite passing butterflies to linger. Massed plantings of a few species are most effective.

Here are some of the best California native nectar plants for our area.

Deerweed	<i>Acmispon glaber</i>
Coyote Mint	<i>Mondardella sp.</i>
Goldenrod	<i>Solidago sp.</i>
Aster	<i>Symphiotrichum</i> and <i>Eurybia sp.</i>
California Aster	<i>Aster chilensis</i>
Buckwheat	<i>Eriogonum sp.</i>

Special thanks to Gary McDonald, Clive Bagshaw, Linda Willis, and Ron Wolf for the use of their photos.

1156 High Street, Santa Cruz, CA 95064

Arboretum Road  
arboretum.ucsc.edu

831-502-2998



## Butterflies at the UC Santa Cruz Arboretum



**KEY**

**Rare - unlikely to be seen**

**Occasional - may be seen by regular visitors to the Arboretum**

**Common - likely to be seen in a visit in season**

Gray Hairstreak



Field Crescent



Satyr comma



West Coast Lady



Mournful Duskywing



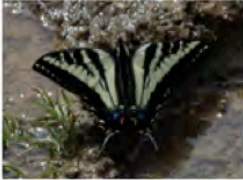
Northern White Skipper



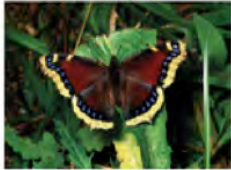
Silvery Blue



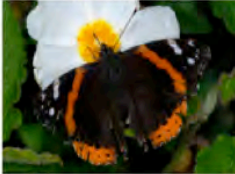
Pale Swallowtail



Mourning cloak



Red Admiral



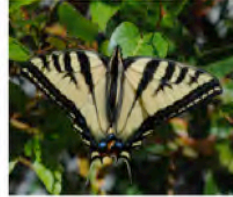
Callippe/Coronis Fritillary



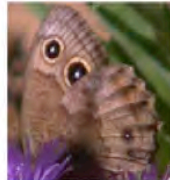
Spring Azure



Western Tiger Swallowtail



Common Wood-Nymph



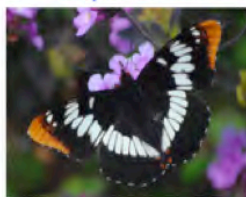
Common Branded Skipper



Woodland Skipper



Lorquin's Admiral



Anise Swallowtail



Acmon Blue



American Lady



Fiery Skipper



Painted Lady



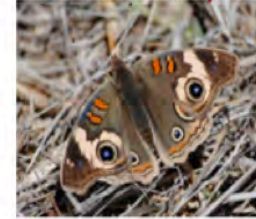
Cabbage White



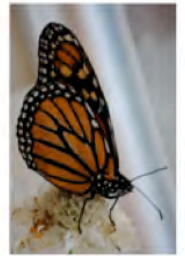
Mylitta Crescent



Common Buckeye



Monarch



Common Ringlet



Common Checkered-Skipper



Umber Skipper

